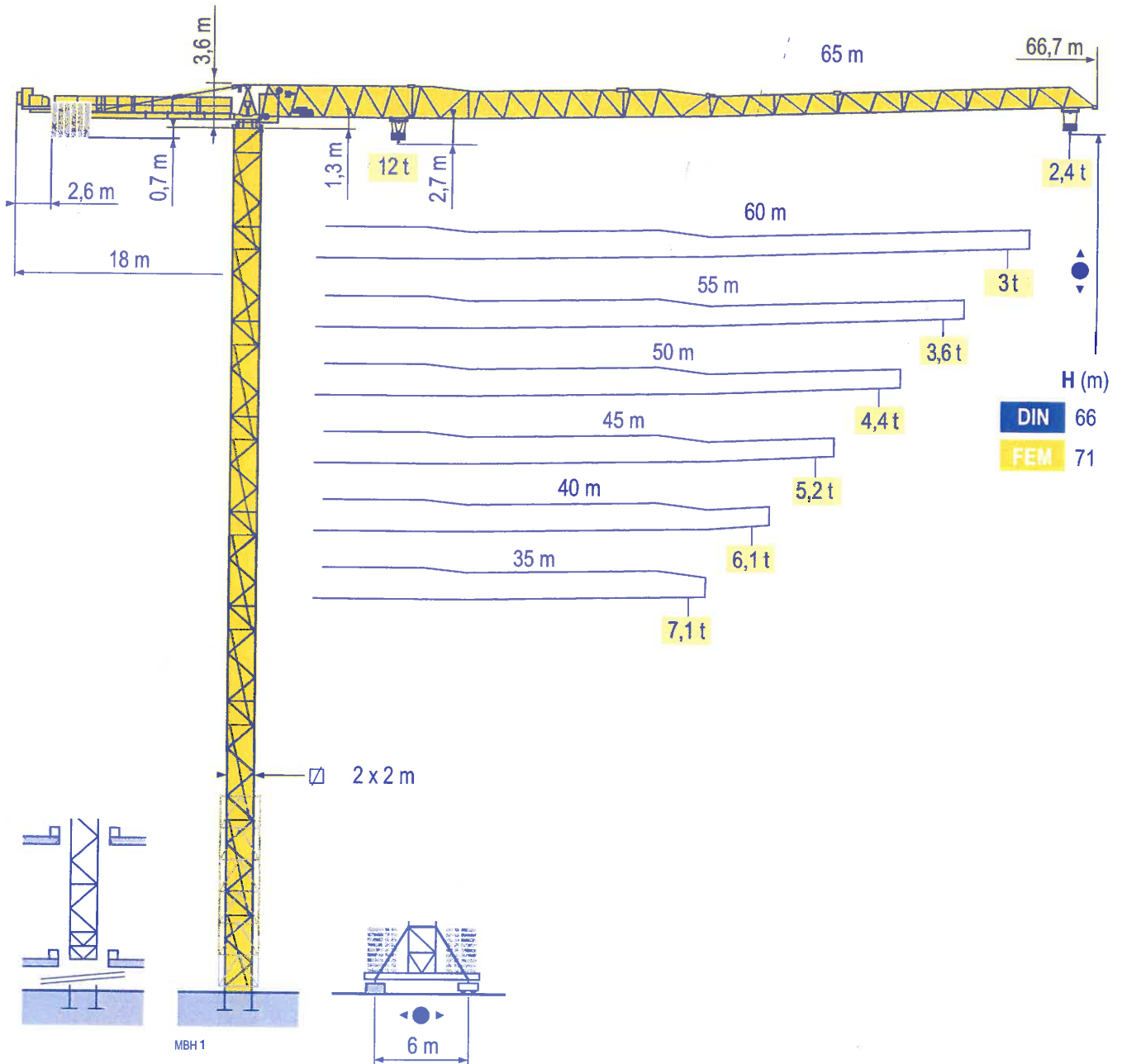


MDT 222 J12 DIN/FEM



Topless

CE DIN 15018 H1 B3
FEM 1.001-A3

Mat / Réactions

DIN

Maste /
Eckdrücke

2 m

Masts /
Reactions

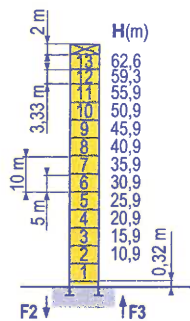
35 m ⇒ 65 m

Mástil /
Reacciones

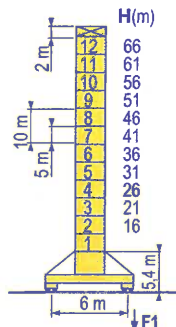
Torre / Reazioni

Tramo /
Reacções

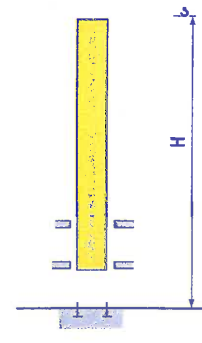
MBH 1



P 61 A
 F2 ● 138 t
 ■ 200 t
 F3 ● 85 t
 ■ 153 t
 ▲ 76 t



V 60 A
 F1 ● 103 t
 ■ 124 t
 ▲ 87 t



B 60 A
 I

Topless

MDT 222 J12 DIN

Mat / Réactions

FEM

Maste /
Eckdrücke

2 m

Masts /
Reactions

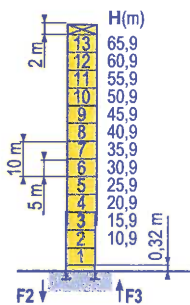
35 m ⇒ 65 m

Mástil /
Reacciones

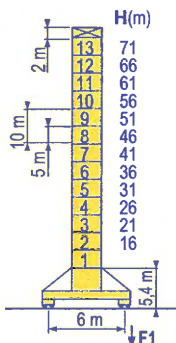
Torre / Reazioni

Tramo /
Reacções

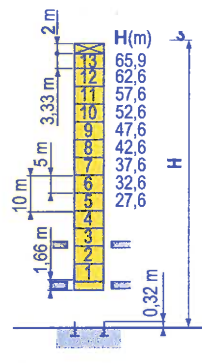
MBH 1



P 61 A
 F2 ● 145 t
 ■ 223 t
 F3 ● 91 t
 ■ 174 t
 ▲ 78 t



V 60 A
 F1 ● 108 t
 ■ 145 t
 ▲ 90 t



B 60 A
 I

Topless

MDT 222 J12 FEM

POTAIN

F

● Réactions en service
 ■ Réactions hors service
 ▲ A vide sans lest (ni train de transport) avec flèche et hauteur maximum.

D

● Reaktionskräfte in Betrieb
 ■ Reaktionskräfte außer Betrieb
 ▲ Ohne Last, Ballast (und Transportachse), mit Maximalausleger und Maximalhöhe.

GB

● Reactions in service
 ■ Reactions out of service
 ▲ Without load, ballast (or transport axes), with maximum jib and maximum height.

E

● Reacciones en servicio
 ■ Reacciones fuera de servicio
 ▲ Sin carga, sin lastre, (ni tren de transporte), flecha y altura máxima.

I

● Reazioni in servizio
 ■ Reazioni fuori servizio
 ▲ A vuoto, senza zavorra (ne assali di trasporto) con braccio massimo e altezza massima.

P

● Reacções em serviço
 ■ Reacções fora de serviço
 ▲ Sem carga (nem trem de transporte) - sem lastro com lança e altura máximas.

Courbes de charges

Lastkurven

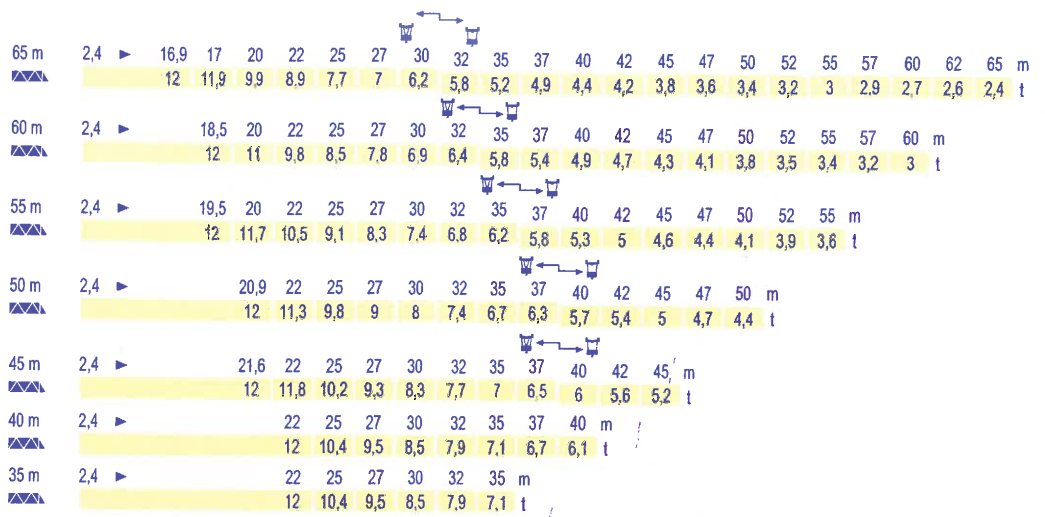
Load diagrams

Curvas de cargas

Curve di carico

Curva de cargas

MBH 1



Lest de contre-flèche

Gegenauslegerballast

Counter-jib ballast

Lastre de contra flecha

Contrappeso

Lastros da contra lança

MBH 1

Height (m)	Span (m)	3 150 kg - 2 100 kg	
		50 LVF 30	75 LVF 30
65 m	18 m	19 950 (kg)	18 900 (kg)
60 m	18 m	18 900	17 850
55 m	18 m	18 900	17 850
50 m	18 m	17 850	16 800
45 m	18 m	16 800	15 750
40 m	18 m	14 700	13 650
35 m	18 m	12 600	11 550

Lest de base - Grundballast

Base ballast - Lastre de base

Zavorra di base - Lastros da base

MBH 1

DIN	V 60 A	H (m)	Weights (t)												
			66	61	56	51	46	41	36	31	26	21	16		
2 m	V 60 A	(t)	120	108	96	84	72	60	48	48	48	48	48	48	48
FEM	V 60 A	(t)	120	96	72	48	48	48	48	48	48	48	48	48	48

Topless

MDT 222 J12 DIN/FEM



Nous consulter



Auf Anfrage



Consult us



Consultamos



Consultateci



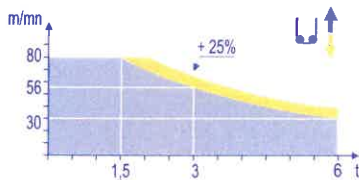
Consultar-nos

Mécanismes
Antriebe
Mechanisms
Mecanismos
Meccanismi
Mecanismos

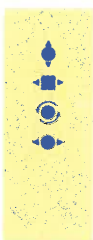
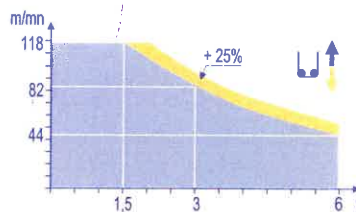
MBH 2

														ch - PS hp	kW												
	50 LVF 30 Optima	m/min	2,4	→	10	→	30	→	38	→	56	→	80	1,2	→	5	→	15	→	19	→	28	→	40	50	37	454 m
		t	6		6		6		4,5		3		1,5	12		12		12		9		6		3			
	75 LVF 30 Optima	m/min	3,8	→	15	→	44	→	58	→	82	→	118	1,9	→	7,5	→	22	→	29	→	41	→	59	75	55	612 m
		t	6		6		6		4,5		3		1,5	12		12		12		9		6		3			
	6 DVF 4	m/min	0 → 50 (12 t) - 0 → 100 (6 t) - 0 → 120 (3 t)												5,5	4											
	RVF 162 Optima +	tr/min U/min rpm	0 → 0,7												2 x 7,5	2 x 5,5											
	V 60 A RT 544 A1 2V R ≥ 13 m	m/min	13,5 - 27												4 x 7	4 x 5,2											
CEI 38						IEC 38						kVA															
400V (+6%-10%) 50 Hz												50 LVF : 75 kVA 75 LVF : 100 kVA															

50 LVF 30
Optima



75 LVF 30
Optima



F

Levage
Distribution
Orientation
Translation

D

Heben
Katzfahren
Schwenken
Kranfahren

GB

Hoisting
Trolleying
Slewing
Travelling

E

Elevación
Distribución
Orientación
Traslación

I

Sollevamento
Distribuzione
Rotazione
Traslazione

P

Elevação
Distribuição
Rotação
Translação



Document commercial non contractuel. Pour toute information technique se référer à la notice correspondante.

Unverbindliches Vertriebsdokument. Für technische Informationen, siehe die entsprechenden Anweisungen.

This commercial document is not legally binding. For any technical information, please refer to the corresponding instructions.

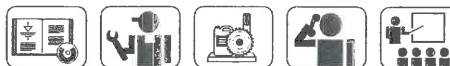
Documento comercial no contractual. Para cualquier información técnica, ver la noticia correspondiente.

Documento commerciale non vincolante, per tutte le informazioni tecniche fare riferimento al catalogo istruzioni.

Documento comercial não contractual. Para qualquer informação técnica complementar consultar as respectivas instruções.

Manitowoc
Crane CARE

POTAIN
Manitowoc Crane Group



Americas

Tel : +1 888 479 7278
Tel : +1 717 593 2000

Europe - Middle East - Africa

Tel : +33 (0) 4 72 81 50 00
Tel : +44 (0) 191 522 2000

Asia - Pacific

Tel : +65 6264 1188
Fax : +65 6862 4142

www.manitowoccrane.com

18, rue de Charbonnières - B.P.173
69132 ECULLY Cedex - France

Tél. : +33 (0) 4 72 18 20 20
Fax : +33 (0) 4 72 18 20 00
www.manitowoccrane.com

Topless MDT 222 J12 DIN/FEM
Réf. 2004 28 MBH 2

Copyright.Reproduction interdite © POTAIN 2004

Réalisation Sedoc