

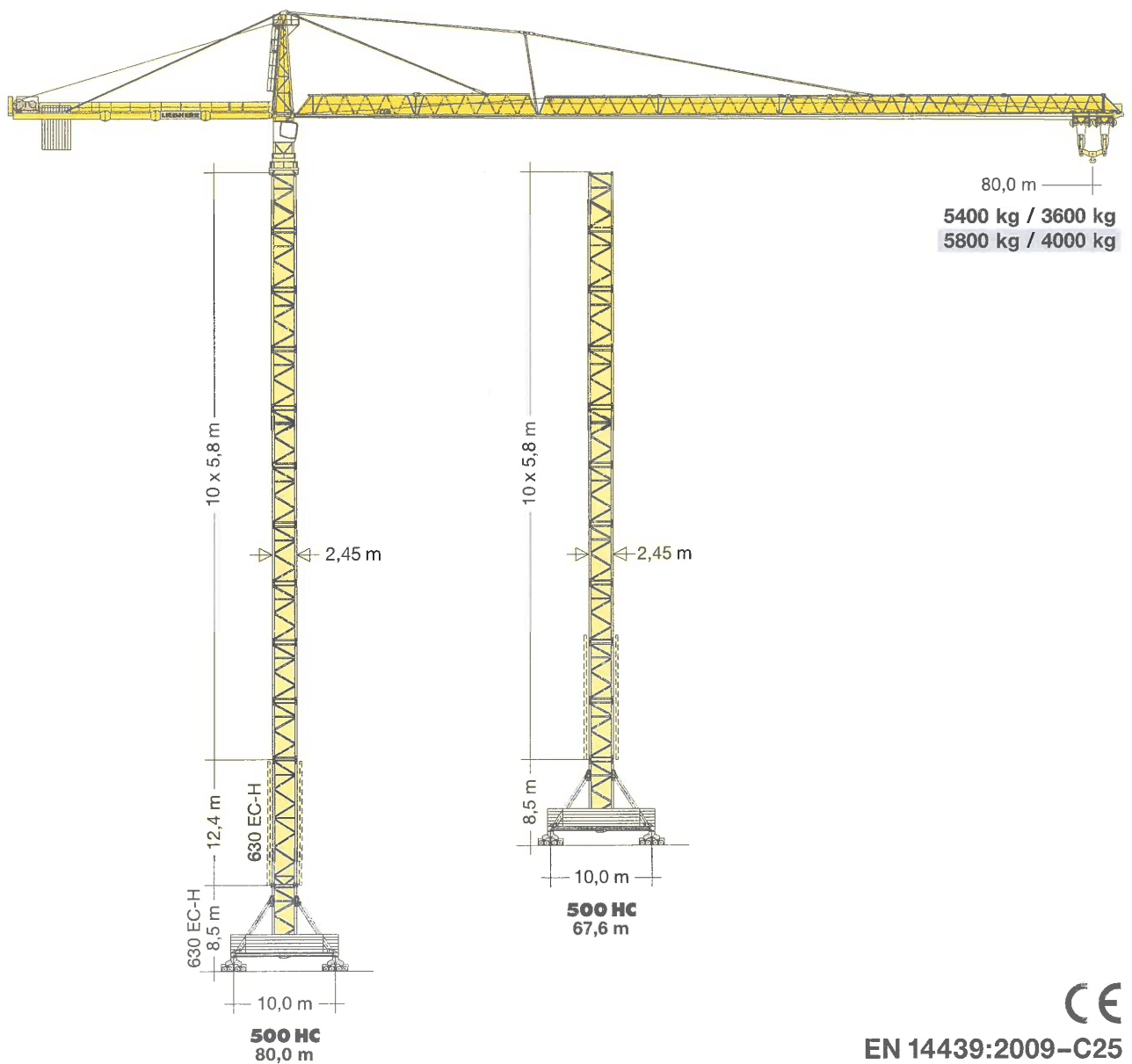
Turmdrehkran

Tower Crane / Grue à tour / Gru a torre / Grúa torre
Guindaste de torre / Башенный поворотный кран

630 EC-H 40 Litronic®

▶ 630 EC-H 40 Litronic®

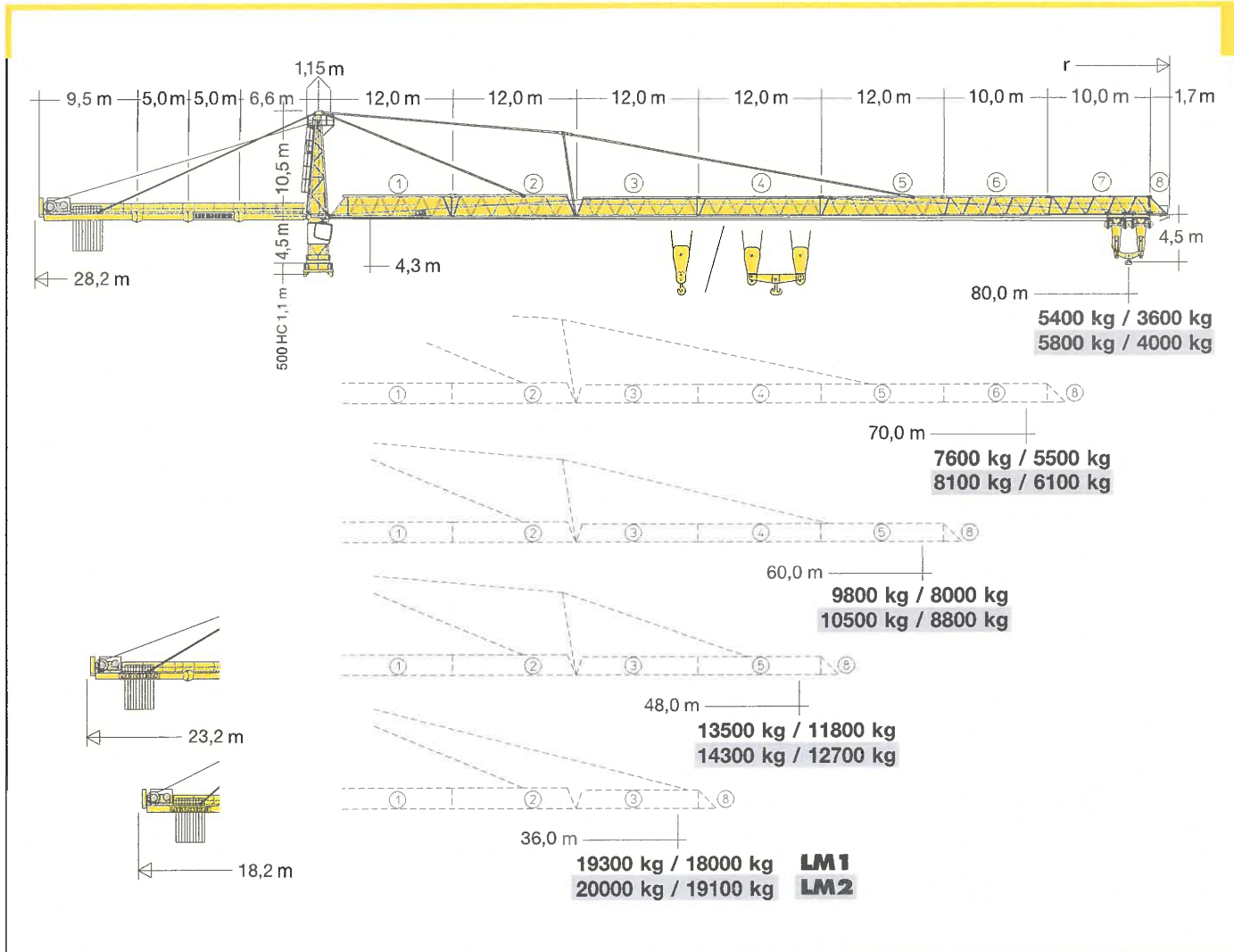
630 EC-H 50 Litronic®



CE

EN 14439:2009-C25

LIEBHERR



Hubhöhe

Hoisting height / Hauteur sous crochet / Altezza di sollevamento
 Altura bajo gancho / Altura de montagem / Высота подъема

		500 HC			
 C 25	10	59,5*	67,6*	71,7*	80,0*
	9	53,7	61,8*	65,9	74,2*
	8	47,9	56,0*	60,1	68,4*
	7	42,1	50,2	54,3	62,6
	6	36,3	44,4	48,5	56,8
	5	30,5	38,6	42,7	51,0
	4	24,7	32,8	36,9	45,2
	3	18,9	27,0	31,1	39,4
	2	13,1	21,2	25,3	33,6
	1	7,2	15,4	19,5	27,8
	0	—	9,6	13,7	22,0
m		m			

* Weitere Hubhöhen, Auslegerlängen sowie Klettern im Gebäude auf Anfrage. / Further hoist heights and jib lengths as well as climbing inside the building on request. / Autres hauteurs sous crochet et longueurs de flèche ainsi que hissage dans le bâtiment sur demande. / Ulteriori altezze gancho, lunghezze braccio così come telescopaggio all'interno dell'edificio: su richiesta. / Para alturas bajo gancho superiores, otros alcances y trepado en el interior del edificio, consultar. / Outras alturas de elevação, comprimentos de lança e subida no edifício: sob consulta. / Другие высоты подъема, длины стрелы и самоподъем в здании – по запросу.

Ausladung und Tragfähigkeit

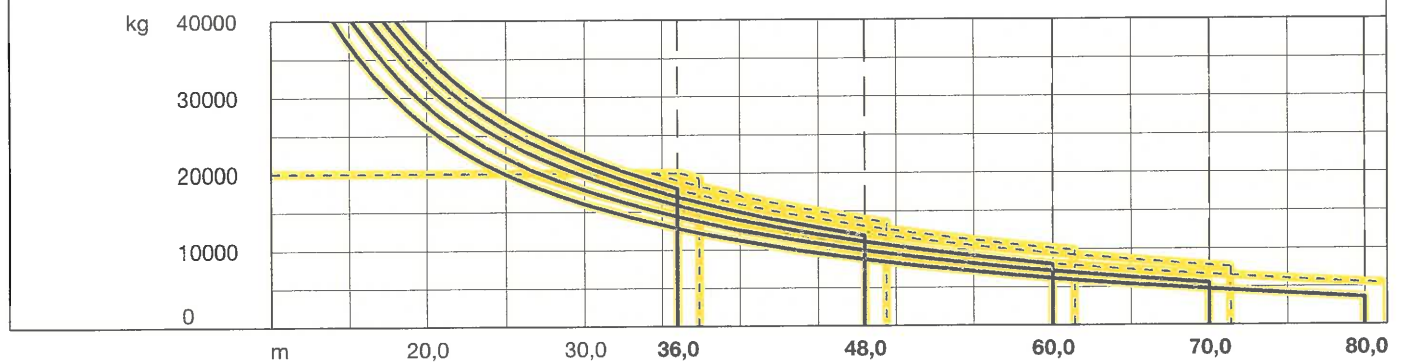
Radius and capacity / Portée et charge / Sbraccio e portata
Alcances y cargas / Alcance e capacidade de carga / Вылет и грузоподъемность

630 EC-H 40

m	r	m/kg	m/kg												
			15,0	20,0	25,0	30,0	37,4	45,0	49,4	55,0	61,4	65,0	71,4	75,0	81,4
81,4	(r=83,4)	5,5-26,7 20000	20000	20000	20000	17710	13950	11330	10160	8940	7810	7270	6440	6030	5400
71,4	(r=73,4)	5,5-30,5 20000	20000	20000	20000	20000	16120	13140	11820	10440	9150	8540	7600		
61,4	(r=63,4)	5,5-32,3 20000	20000	20000	20000	20000	17160	14010	12620	11150	9800				
49,4	(r=51,4)	5,5-34,4 20000	20000	20000	20000	20000	18310	14980	13500						
37,4	(r=39,4)	5,5-36,2 20000	20000	20000	20000	20000	19300								


m	r	m/kg	m/kg												
			15,0	20,0	25,0	30,0	36,0	40,0	48,0	55,0	60,0	65,0	70,0	75,0	80,0
80,0	(r=83,4)	4,3-14,0 40000	36890	26190	19910	16060	12810	11160	8670	7070	6150	5370	4700	4110	3600
70,0	(r=73,4)	4,3-15,2 40000	40000	28920	22080	17880	14340	12550	9830	8090	7080	6230	5500		
60,0	(r=63,4)	4,3-16,4 40000	40000	31610	24210	19670	15840	13900	10970	9080	8000				
48,0	(r=51,4)	4,3-17,2 40000	40000	33560	25760	20980	16940	14900	11800						
36,0	(r=39,4)	4,3-18,0 40000	40000	35440	27250	22240	18000								

LM 1



Antriebe Litronic®

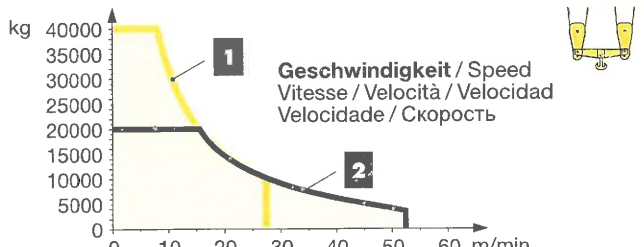
Driving units / Mécanismes d'entraînement / Meccanismi / Mecanismos / Mecanismos / Приводы



65 kW FU [SD.shift]
WIW 280 WZ 403 5 Lagen
Layers
Couches
Avvolgimenti
Camadas
Capas
Слоёв
183,0 m / 92,0 m
max. 368,0 m / 184,0 m**

↔ stufenlos / stepless / régl. continu / régl. progressiva / sin escalones / sem degraus / бесступенчатый kg m/min kg m/min


1	20000	0 ↔ 16	40000	0 ↔ 8
	4500	0 ↔ 54	9300	0 ↔ 27
2	9600	0 ↔ 32	20000	0 ↔ 16
	1500	0 ↔ 105	3700	0 ↔ 52



kg 40000
35000
30000
25000
20000
15000
10000
5000
0

Geschwindigkeit / Speed
Vitesse / Velocità / Velocidad
Velocidade / Скорость

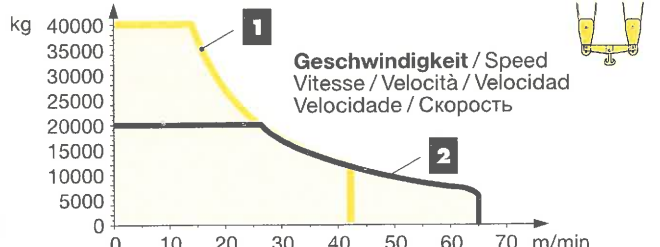
0 10 20 30 40 50 60 m/min



110 kW FU [SD.shift]
WIW 300 WZ 403 5 Lagen
Layers
Couches
Avvolgimenti
Camadas
Capas
Слоёв
183,0 m / 92,0 m
max. 368,0 m / 184,0 m**

↔ stufenlos / stepless / régl. continu / régl. progressiva / sin escalones / sem degraus / бесступенчатый kg m/min kg m/min

1	20000	0 ↔ 28	40000	0 ↔ 14
	5700	0 ↔ 76	12000	0 ↔ 42
2	10000	0 ↔ 52	20000	0 ↔ 26
	2800	0 ↔ 128	6000	0 ↔ 65



kg 40000
35000
30000
25000
20000
15000
10000
5000
0

Geschwindigkeit / Speed
Vitesse / Velocità / Velocidad
Velocidade / Скорость

0 10 20 30 40 50 60 70 m/min

** Weitere Hublastdaten: siehe Betriebsanleitung. / Further hoist load data: see instruction manual. / Autres données de la charge de levage: voir manuel d'instruction. / Altri dati sui carichi sollevati: consultare il manuale d'istruzione. / Alturas bajo granco superiores según manual. / Outras tabelas de carga: consultar manual de instruções. / Другие данные по весу поднимаемых грузов: см. инструкцию по эксплуатации.

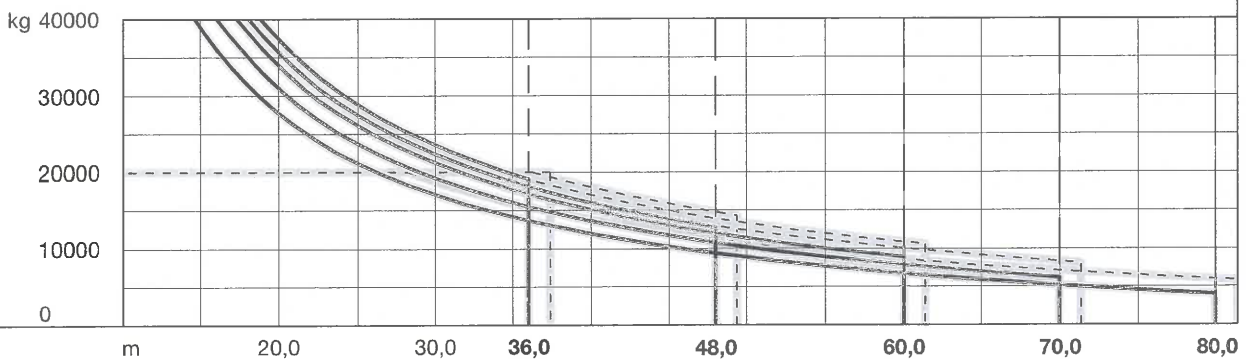
Ausladung und Tragfähigkeit

Radius and capacity / Portée et charge / Sbraccio e portata
Alcances y cargas / Alcance e capacidade de carga / Вылет и грузоподъемность

		630 EC-H 40 Litronic®														
m	r	m/kg	m/kg													
			15,0	20,0	25,0	30,0	37,4	45,0	49,4	55,0	61,4	65,0	71,4	75,0	81,4	
81,4	(r=83,4)	5,5-28,2 20000	20000	20000	20000	18760	14800	12040	10810	9530	8340	7770	6900	6470	5800	
71,4	(r=73,4)	5,5-32,2 20000	20000	20000	20000	20000	17050	13920	12540	11080	9730	9090	8100			
61,4	(r=63,4)	5,5-34,4 20000	20000	20000	20000	20000	18280	14960	13480	11930	10500					
49,4	(r=51,4)	5,5-36,3 20000	20000	20000	20000	20000	19350	15850	14300							
37,4	(r=39,4)	5,5-37,4 20000	20000	20000	20000	20000	20000									

m	r	m/kg	m/kg													
			15,0	20,0	25,0	30,0	36,0	40,0	48,0	55,0	60,0	65,0	70,0	75,0	80,0	
80,0	(r=83,4)	4,3-14,7 40000	38990	27740	21140	17090	13680	11950	9330	7650	6680	5860	5150	4540	4000	
70,0	(r=73,4)	4,3-16,1 40000	40000	30970	23700	19250	15480	13580	10700	8850	7780	6880	6100			
60,0	(r=63,4)	4,3-17,4 40000	40000	33950	26070	21240	17150	15090	11960	9960	8800					
48,0	(r=51,4)	4,3-18,1 40000	40000	35680	27440	22390	18130	15970	12700							
36,0	(r=39,4)	4,3-18,9 40000	40000	37400	28810	23550	19100									

LM2



Antriebe Litronic®

Driving units / Mécanismes d entraînement / Meccanismi / Mecanismos / Mecanismos / Приводы

↔ **stufenlos** / stepless / régl. continu / régl. progressiva / sin escalones / sem degraus / бесступенчатый

kg m/min kg m/min

110 kW FU
WIW 300 VZ 432

5 Lagen
Layers
Couches
Avvolgimenti
Camadas
Capas
Слоев

202,0 m / 101,0 m


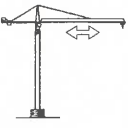
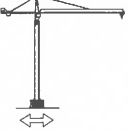
max. 520,0 m / 260,0 m**



	1	2	3
20000	0 ↔ 28	40000	0 ↔ 14
9300	0 ↔ 56	18800	0 ↔ 28
9800	0 ↔ 53	19700	0 ↔ 27
4200	0 ↔ 107	8800	0 ↔ 54
4900	0 ↔ 95	10100	0 ↔ 48
1500	0 ↔ 172	4000	0 ↔ 86

Geschwindigkeit / Speed
Vitesse / Velocità / Velocidad
Velocidade / Скорость

LM 2

Abweichende Geschwindigkeiten und Betriebsbedingungen.
Variant speeds and service conditions. / Vitesses et conditions de fonctionnement différentes. / Differenti velocità e condizioni di funzionamento. / Outras velocidades e características de funcionamento. / Нестандартные скорости и условия эксплуатации.

	U/min 0 ↔ 0,6 sl./min tr./min	2 x 11,0 kW FU
	0 ↔ 70,0 m/min	11,0 kW FU
	25,0 m/min	4 x 7,5 kW

	
	65 kW FU 110 kW FU 103,0 133,0

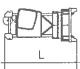

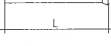
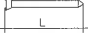

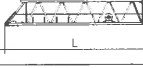
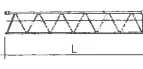




Litronic: kVA reduzierbar bei zu geringer Netz-Anschlussleistung, siehe BAL. / kVA can be reduced in case of too little power of the mains, see instruction manual. / kVA peut être réduit en cas de trop faible puissance du réseau, voir manuel d'instruction. / kVA riducibili in caso di potenza di rete ridotta (si veda manuale uso e manutenzione) / kVA variable para potencia de red demasiado pequeña, ver Manual de instrucciones. / kVA reduzível no caso de capacidade da rede elétrica muito baixa, ver manual de instruções. / Количество кВА может быть сокращено до минимальной общей потребляемой мощности, см. инструкцию по эксплуатации.


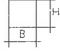

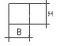


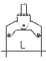
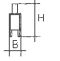
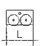
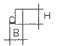









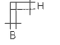
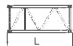

Kolli-Liste

Packing List / Liste de colisage / Lista dei colli

Lista de contenido / Lista de embalagem / Упаковочный лист

Montagegewichte: siehe Betriebsanleitung. / Erection weights: see instruction manual. / Poids de montage: voir manuel de service. / Pesì di montaggio: vedere manuale d'uso. / Peso para el montaje: según manual. / Pesos de montagem: vejã-m-se as instruções p. uso. / Масса монтируемых частей: см. инструкцию по эксплуатации.

Kranoberteil		Upper part of crane / Partie supérieure de grue / Parte superiore della gru		L (m)	B (m)	H (m)	kg*	
Pos.	Anz.	Parte superior grúa / Parte superior do guindaste / Верхняя часть крана						
1	1	Drehbühne kpl. / Slewing platform cpl. / Ensemble mât cabine cpl. / Piattaforma girevole compl. / Conjunto plataforma de giro / Plataforma giratória compl. / Поворотная платформа в сб.		6,40	2,98	3,17	21900	
2	1	Turmspitze / Tower head section / Porte-flèche / Testa porta-braccio / Cabeza de torre / Cabeça de apoio de lança / Оголовок башни		10,44	1,80	2,20	6100	
3	1	Gegenausleger-Kopfstück / Counter-jib head / Pointe de contre-flèche / Testa di controbraccio / Tramo punta de contrapluma / Cabeça de contra-lança / Концевая секция консоли противовеса		10,50	2,32	1,05	5800	
4	1	Gegenausleger-Anlenkstück / Counter-jib heel section / Pied de contre-flèche / Settore articolato di controbraccio / Tramo primero-contrapluma / Base articulada da contra-lança / Корневая секция консоли противовеса		6,90	1,98	1,05	3300	
5	2	Gegenausleger-Zwischenstück / Intermediate counter-jib section / Élément interm. de contre-flèche / Spezzone di controbraccio / Tramo intermedio de contrapluma / Peça suplementar da contra-lança / Промежуточная секция консоли противовеса		5,20	1,90	1,05	2700	
6	1	Ausleger-Anlenkstück + KAW / Jib heel section / Pied de flèche / Settore articolato di braccio / Pluma tramo primero / Base articulada de lança / Корневая секция стрелы + тележечная лебедка		12,31	1,98	2,34	① 6400	
7	1	Ausleger-Zwischenstück / Intermediate jib section / Élément intermédiaire de flèche / Sezione intermedia braccio / Tramo intermedio pluma / Peça suplementar da lança / Промежуточная секция стрелы		12,31	1,77	2,23	② 4100	
1	12,31			1,77	1,96	③ 2920		
1	12,27			1,77	1,96	④ 2650		
2	12,27			1,77	1,96	⑤ 2750		
1	10,29			1,77	1,96	⑥ 1640		
1	1	10,25	1,77	1,96	⑦ 1190			
8	1	Ausleger-Kopfstück / Jib head section / Pointe de flèche / Punta braccio / Tramo punta de pluma / Cabeça de lança / Концевая секция стрелы		2,56	1,77	2,25	⑧ 540	
9	2	Laufkatze / Trolley / Chariot de distribution / Carrello / Carrito / Carro de ponte / Грузовая тележка		3,25	2,02	1,83	850	
				3,25	2,02	1,83	750	
10	1	Lasthaken und Traverse / Hook and cross members / Crochet et traverses / Gancio e traversa / Gancho y tavessa / Gancho e traviesa / Грузовой крюк и траверса		3,50	1,80	0,50	2000	
11	1	Hubwerkseinheit (65 kW) / Hoist gear unit / Treuil de levage / Gruppo meccanismo sollevamento / Mecanismo de elevación / Grupo de mecanismo elevatório / Блок грузовой лебедки		280 VZ	2,30	2,70	1,65	6750
12	1	Ausleger-Abspannbock / Jib gantry / Chevalet de haubange de flèche / Tirante braccio / Caballete de pluma / Cavalete de lança / Опора расчала стрелы		8,20	1,50	0,30	810	

Pos. Item Rep. Voce Pos. Ref. Поз.	Anz. Qty. Qta. Qta. Cant. Cant. Кол-во				L (m)	B (m)	H (m)	kg*	
Turm Tower / Mât / Torre Torre / Torre / Башня									
13	13	Turmstück / Tower section Elément de mât / Elemento di torre Tramo torre / Torre / Башенная секция			500 HC	6,28	2,45	2,45	6480
14	1	Grundturmstück / Base tower section / Mât de base / Elemento di torre base Tramo base Peça de base de torre / Секция основания			630 EC-H	12,42	2,67	2,67	14100
Klettereinrichtung Climbing equipment / Equipement de télescopage / Attrezzatura per allungamento della gru Equipo de trepado / Acesoários p. subida no edifício / Обойма наращивания									
15	1	Führungsstück kpl., geteilt / Guide section cpl., split Cage télescopique cpl., dévisée / Gabbia di sopraelevazione compl., suddivisa / Torre de montaje, dividida Peça de guia, subdividida / Направляющая секция в сб., разъемная			500 HC	12,39	2,75	1,58	8950
16	1	Hydraulikanlage, Stütz- und Klettertraverse / Hydraulic unit, supporting and climbing cross members / Système hydraulique avec traverses d'appui et de télescopage / Sistema idraulico, traversa di appoggio e allungamento gru / Sistema hidráulico con traviesa de apoyo y trepado / Instalação hidráulica, travessa de apoio e subida / Гидроагрегат, стойка-упор и траверса обоймы наращивания			500 HC	2,10	1,10	1,00	1710
Unterwagen Undercarriage / Châssis / Carro Carro con mástil / Carro de guindaste / Опорная рама									
17	4	Ausgleichsschwinge mit Schwingenlager / Pivot for wheel box / Chape pour bogie / Bilanciere di equilibrio con cuscinetto bilanciere / Balancin / Balancim com suporte / Балансир с шарнирной опорой			500 HC 630 EC-H	1,60 1,60	0,72 0,72	1,48 1,48	1470 1470
18	4	Fahrschemel mit Antrieb / Rail bogie with drive Bogie moteur / Telaio con gruppo propulsore Caja rodillo motriz / Quadro sem grupo de propulsão Подрамник с приводом			500 HC 630 EC-H	1,45 1,45	0,82 0,82	0,72 0,72	1110 1110
19	4	Fahrschemel ohne Antrieb / Rail bogie without drive Bogie fou / Telaio senza gruppo propulsore / Caja rodillo conducido / Quadro com grupo de propulsão Подрамник без привода			500 HC 630 EC-H	1,30 1,30	0,40 0,40	0,72 0,72	760 760
20	1	Tragholm lang / Long support arm / Longeron long Longherone lungo / Brazo soporte largo / Travessa comprida / Несущая балка, длинная			500 HC 630 EC-H	7,32 7,32	0,92 0,92	0,93 0,93	2330 2330
21	2	Tragholm kurz / Short support arm / Longeron court Longherone corto / Brazo soporte corto / Travessa curta / Несущая балка, короткая			500 HC 630 EC-H	7,14 7,14	0,80 0,80	0,90 0,90	2135 2135
22	4	Randträger / Border support / Traverse Supporti base / Traviesa / Apoio de bordo Стяжная балка			500 HC 630 EC-H	9,30 9,30	0,14 0,14	0,14 0,14	510 510
23	4	Stützholm / Support strut / Hauban de châssis Correnti di appoggio / Tirante vertical / Travessa de apoio / Опорный подкос			500 HC 630 EC-H	6,98 6,98	0,26 0,26	0,34 0,34	1140 1140
24	1	Unterwagen-Turmstück / Undercarriage tower section / Mât de châssis / Elemento di torre del carro Tramo de carro / Peça de torre do chassis Опорная башенная секция			500 HC 630 EC-H	6,61 6,61	2,44 2,67	2,44 2,67	7930 9400
25	1	Kiste mit Kleinteilen, Seilen / Crate with small parts, ropes Caisse contenant des accessoires, câbles / Cassa con minuteria, funi Caja con piezas pequeñas, cables / Caixa com peças pequenas, cabos Ящик с мелкими деталями, с канатами			630 EC-H	2,00	1,00	1,00	2000
26	1	Abspannungen / Holding bars / Tirants Attrezzi di ancoraggio / Tirantes Peças de ancoragem / Пристежки				7,60	1,00	1,00	7100

* Einzelgewichte. / Single weights. / Poids individuels. / Singoli pesi. / Pesos unitarios. / Pesos de peças componentes. / Индивидуальный вес.

Konstruktionsänderungen vorbehalten! / Subject to alterations! / Sous réserves de modifications! / Riservato il diritto di modifiche strutturali!
¡Sujeto a modificaciones! / Salvo modificação da construção! / Права на внесение конструкторских изменений сохраняются!

Sämtliche Angaben erfolgen ohne Gewähr. / This information is supplied without liability. / Ces renseignements sont sans garantie. / Tutte le indicazioni fornite senza garanzia. / Declinamos toda responsabilidad derivada de la información proporcionada. / Declinamos qualquer responsabilidade quanto à informação fornecida. / Все данные указаны без обязательств.